



9:42 AM

EIM

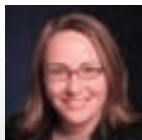
ElmTwitter



CSR411

8:31 AM

I know you write a ton of Garage accounts... and I heard that there have been some great enhancements made to your program recently. Can you tell about some of the changes?



Dyan Bates

8:39 AM

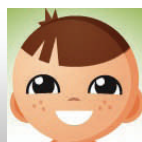
We have a couple of great garage carriers!! Recently one of them lifted their restrictions for theft coverage on Open Lots. This was an amazing enhancement to their program. They also removed the trailer hitch exclusion too. Employment Practices Liability coverage is now available for as little as \$50. And just the other day they released new property rates. Truly our garage rates are the best around and backed by knowledgeable underwriters... how can you beat that!!



CSR411

8:42 AM

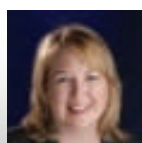
Those are some great enhancements!! I will be sure to give you first look at all my garage accounts!



Producer777

9:29 AM

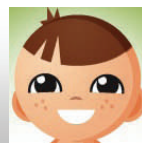
What is your typical turn around time on quotes? And can you do a RUSH for me today?



Cheri Bahmanyar

9:35 AM

Typically we are turning out quotes within 24 - 48 hours after receiving your submission. Rush quotes are one of our specialties!! Send us your RUSH application and I'll get working on it right away!!



Producer777

9:39 AM

Great!! I will send you my RUSH application over right away PLUS 2 additional submissions that I must place in the next couple of days.



**EVERGREEN
INSURANCE**

Evergreen Insurance Managers Inc
Evergreen Independent Insurance Marketing
CA License #: 0G35858

www.EvergreenInsMgrs.com

