

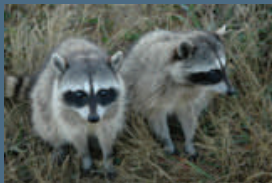


EVERGREEN  
INSURANCE  
MANAGERS INC.

[www.EvergreenInsMgrs.com](http://www.EvergreenInsMgrs.com)

**SERVING:**

Oregon  
Washington  
& Idaho



Just Say NO!!

Helping to grow your business... one policy at a time!!

August 14, 2007

# Pest Control Services

## Types of Acceptable Pests

- Ants
- Bats
- Bees
- Beetles
- Cockroaches
- Crickets
- Fleas
- Millipedes
- Mosquitoes
- Mice
- Possums
- Raccoons
- Rats
- Spiders
- Termites
- Plus Many More

In need of a *Commercial Pesticide Applicators Financial Responsibility Insurance Certificate?*

**EVERGREEN CAN HELP!!**

## Submission Requirements:

- Acord application
- Contractors questionnaire
- 3~5 year currently valued loss runs
- Email your submission to [mail@evergreeninsmgrs.com](mailto:mail@evergreeninsmgrs.com) or
- Fax your submission to 503-259-3065



**Nancy Schultz**

Phone: 503-259-3060

[nschultz@evergreeninsmgrs.com](mailto:nschultz@evergreeninsmgrs.com)

**New Submissions:** [mail@evergreeninsmgrs.com](mailto:mail@evergreeninsmgrs.com)

## The Evergreen Advantage:

- AM Best rated A carrier
- Experienced underwriters
- Fast, friendly service
- Same day binder confirmations
- Superior policy issuance
- Low minimum premium

# EVERGREEN INSURANCE MANAGERS INC

503-259-3060 Tele • 866-450-1150 Toll Free • 503-259-3065 Fax



VISIT US AT [www.EVERGREENINSMGRS.COM](http://www.EVERGREENINSMGRS.COM)



To ADD your name to our mailing list please [click here](#).  
If you do not wish to receive further e-mails from Evergreen, [click here](#) to unsubscribe.